

# Principles of Criminal Investigative Analysis

*Understanding and Combating  
the Criminal Mind*

# Speaker Profile



## **Dr. George Cronin**

Homicide Investigator, Pennsylvania State Police  
Department

Professor of Criminal Justice

- Ph.D. from Temple University Department of Criminal Justice
- Past 24 years have been spent primarily as a homicide investigator at Pennsylvania State Police Department
- Trained extensively in criminal investigation assessment
- Richard Block Dissertation Award for Homicide Research winner

# Speaker Profile



## **James P. Rooney, Jr.**

Detective Lieutenant, Suffolk County Police Department  
Colonel, United States Marine Corps Reserve (Retired)  
Professor of Criminal Justice

- Served as a Marine Officer for over 30 years
- Certified DoD Homeland Security Planner and designated as an Emergency Planning Liaison Officer
- 24 year member of Suffolk County Police Department
- Graduate of the 195<sup>th</sup> Session of the FBI National Academy

# Speaker Profile



## Timothy J. Hardiman

Inspector, New York Police Department (Retired)  
AMU Professor of Criminal Justice

- Retired at the rank of Inspector after a 23 year career with the NYPD
- Supervisor in the Intelligence Division and as Commanding Officer of the 71<sup>st</sup> Detective Squad in Brooklyn and the Brooklyn Special Victims Squad
- Provided instruction at the NYPD's Sex Crimes and Child Abuse course
- Graduate of the 194<sup>th</sup> Session of the FBI National Academy

# Principles of Criminal Investigative Analysis

*George Cronin*

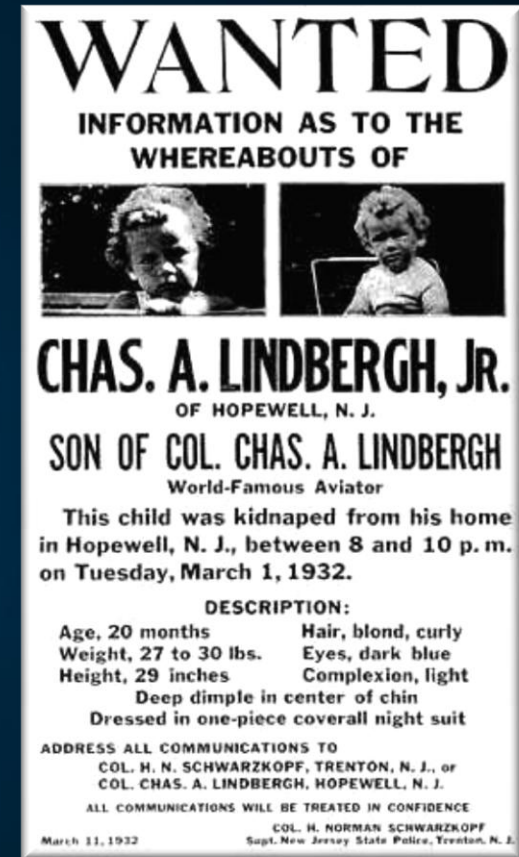
*What is Criminal Profiling and CIA?*

# Why this Topic is Important

- Most violent crime cases involve victim and offenders known to one another
- Nonconventional cases have no apparent link between the victim and the offender
- Nonconventional cases are by their nature resource intensive and expensive

# Historical Origins of Criminal Profiling

- Investigation of the Whitechapel murderer, also known as Jack the Ripper, in 1888
- Kidnapping of Charles Lindbergh, Jr., in the 1920s
- Evaluation of Adolf Hitler by the U.S. Office of Strategic Services
- Mad Bomber of New York and the Boston Strangler in the 1950s and 1960s
- Evaluating crime behaviors to infer attributes about the probable offender, is in fact very old



# What Profiling Purports

- Criminal profiling is based on behavior, and can be understood as a psychological technique whereby behaviors evident in a crime or series of related crimes are evaluated for the purpose of inferring attributes about probable offenders.

# Criminal Profiling

- Criminal Profiling begins with seeking to answer three questions:
  - What happened at the crime scene?
  - Why did these events happen?
  - What type of person would have done this?

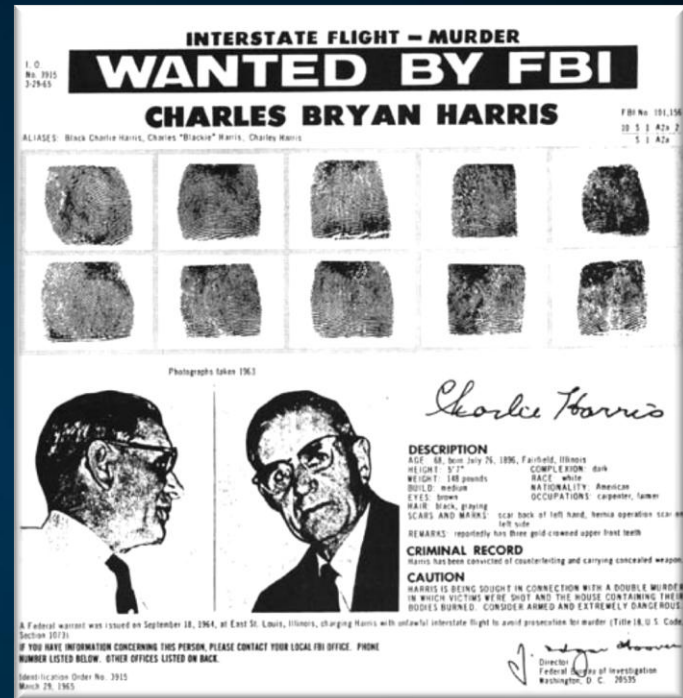


# Criminal Profiling

- Criminal profiling can be understood as a psychological technique whereby behaviors evident in a crime or series of related crimes are evaluated typically for the purpose of inferring attributes about probable offenders.

# Criminal Investigative Analysis (CIA)

- 1970's FBI Behavioral Sciences Unit
- Research Program to study the behavioral patterns of violent offenders and manifest in these violent crimes
- The cornerstone of this effort was the shift from psychological/psychiatric diagnoses to an operational agenda for law enforcement



# Criminal Investigative Analysis (CIA)

- Case Linkage
- Modus Operandi
- Signature
- Victimology
- Situational Context
- Staging



# Validity and Utility

- Problems with empirically validating the CIA technique
- CIA application has grown in scope
- Lack of research overshadowed by the continuing employment of the technique by the police

# Presentation References

- Davis, J. A. (1999). Criminal Personality Profiling and Crime Scene Assessment. *Journal of Contemporary Criminal Justice*, 15(3), 291-301.
- Douglas, J. E., Burgess, A. W., Burgess, A. G., & Ressler, R. K. (1997). *Crime Classification Manual, A Standard System for Investigating and Classifying Violent Crimes*. San Francisco, CA: Jossey-Bass Inc.
- Douglas, J. E., Burgess, A. W., & Hartman, C. R. (1986). Criminal Profiling from Crime Scene Analysis. *Behavioral Sciences and the Law*, 4, 401-421.
- Hazelwood, R. R., & Napier, M. R. (2004). Crime scene staging and its detection. *International Journal of Offender Therapy and Comparative Criminology*, 48(6), 744-759.
- Keppel, R. D. (2000). Investigation of the Serial Offender: Linking Cases Through Modus Operandi and Signature. In L. B. Schlesinger (Ed.), *Serial Offenders: Current Thought, Recent Findings*. Boca Raton, FL: CRC Press.
- Kocsis, R. N. (2009). Criminal Profiling. In R. N. Kocsis (Ed.), *Applied Criminal Psychology: A Guide to Forensic Behavioral Sciences* (pp. 213-233). Springfield, IL: Charles C Thomas.
- Muller, D. A. (2000). Criminal Profiling: Real Science or Just Wishful Thinking? *Homicide Studies*, 4(3), 234-264.
- Rossmo, D. K. (2000). *Geographic Profiling*. Washington DC: CRC Press.

# Principles of Criminal Investigative Analysis

*Jim Rooney*

*Arson-Related Crimes*

# Criminal Investigative Analysis

- A tool for the Arson detective
- Provides “profiles” of convicted criminals
- Academic research based on empirical data

# National Center for the Analysis of Violent Crime

- Federal Bureau of Investigation
- Based in Quantico, Virginia
- Compilation of interviews of convicted criminals to determine reason and motivations for their criminal conduct



# NCAVC

- Documented motivations for Arson-related crimes
  - Profit
  - Vandalism
  - Excitement
  - Revenge
  - Crime Concealment
  - Extremism (Terrorist)



*Photo courtesy of DoD*

# Mixed Motivations

- Investigators will encounter cases that illustrate a combination of motivations
- Revenge / Vandalism
- Extremist / Revenge



*Photo courtesy of NASA*

# Fire Fighter Arsonist

- Hero / Vanity motivations
- Similar to night watchman perspective
- Desire to use firefighting equipment and training (age group: 19-26)
- Establish requirement background investigation for Fire Fighter applicants
- Disparagement of members of fire service (police corruption)

# Principles of Criminal Investigative Analysis

*Tim Hardiman*

*CIA in Sexual Assault Investigations*

# CIA in Sexual Assault Investigations

- Forming Patterns
  - The same perpetrator is responsible for a number of crimes
  - Incorrectly including or excluding cases from a pattern can adversely affect the investigation

# Behavior vs. Description

- Eyewitness identifications are inherently unreliable
- Physical descriptions are not very useful in linking crimes
  - Intraracial
  - Most sex crimes are committed by males
  - Most people are “Average”
  - Hiding or disguising distinguishing features
  - Behavior remains relatively constant over time – even long periods of time while physical description may change.

# Behavior vs. Description

- Behavior is useful in linking crimes, especially sex crimes
  - There is more behavior to analyze than other crimes
  - The attacker is not able to control some of this behavior (sexual dysfunction)
  - Victims better remember what happened to them than what they saw

# Behavior vs. Description

- Analyzing the perpetrator's behavior is a better tactic to form patterns and to use when deciding to include or exclude cases than physical description

# Other Uses of CIA

- Classifying the rapist into one of the four standard categories
- Identifying suspects through past arrests
- Interviewing strategies when a suspect has been identified

# Thank You!

For additional questions  
please contact:

AMU Admissions – [admissions@apus.edu](mailto:admissions@apus.edu)

AMU Webcasts – [webcast@apus.edu](mailto:webcast@apus.edu)

[www.amu.apus.edu](http://www.amu.apus.edu)